

Elsa Schiaparelli: A Surrealist Muse in the World of Fashion

In the annals of fashion history, few names evoke as much intrigue and admiration as Elsa Schiaparelli. A true visionary, she challenged conventions and pushed the boundaries of design, leaving an indelible mark on the fashion landscape. Her surreal and whimsical creations, infused with a touch of the avant-garde, captivated the attention of the world's most discerning fashionistas and cemented her place as one of the most influential designers of the 20th century.



Schiaparelli by Brian Solomon

★★★★☆ 4.9 out of 5

Language : English
File size : 20116 KB
Text-to-Speech : Enabled
Screen Reader : Supported
Enhanced typesetting : Enabled
Print length : 31 pages
Lending : Enabled



Early Life and Influences

Elsa Schiaparelli was born in Rome, Italy, in 1890. Her upbringing in an aristocratic family exposed her to art, culture, and the finer things in life. From an early age, she displayed a keen interest in fashion, sketching and creating her own designs. Her unconventional spirit and desire to break free from societal norms would later become the driving force behind her groundbreaking creations.

Schiaparelli's artistic sensibilities were nurtured by her close association with intellectuals and artists. She befriended the likes of Jean Cocteau, Salvador Dalí, and Leonor Fini, whose surrealist ideas and aesthetics would greatly influence her own work. The surrealist movement, with its emphasis on dreamlike imagery, ambiguity, and the juxtaposition of seemingly unrelated elements, provided Schiaparelli with a fertile ground for experimentation.

Career and Innovations

In 1927, Schiaparelli opened her first boutique in Paris, the fashion capital of the world. Her unique designs quickly gained recognition for their bold colors, unconventional shapes, and surrealist touches. She fearlessly experimented with new materials and techniques, introducing everyday objects and unexpected elements into her creations.

One of Schiaparelli's most iconic creations is the "Lobster Dress," designed in collaboration with Salvador Dalí. The dress featured a lifelike lobster appliqued on the bodice, symbolizing the sea creatures' amorous behavior.

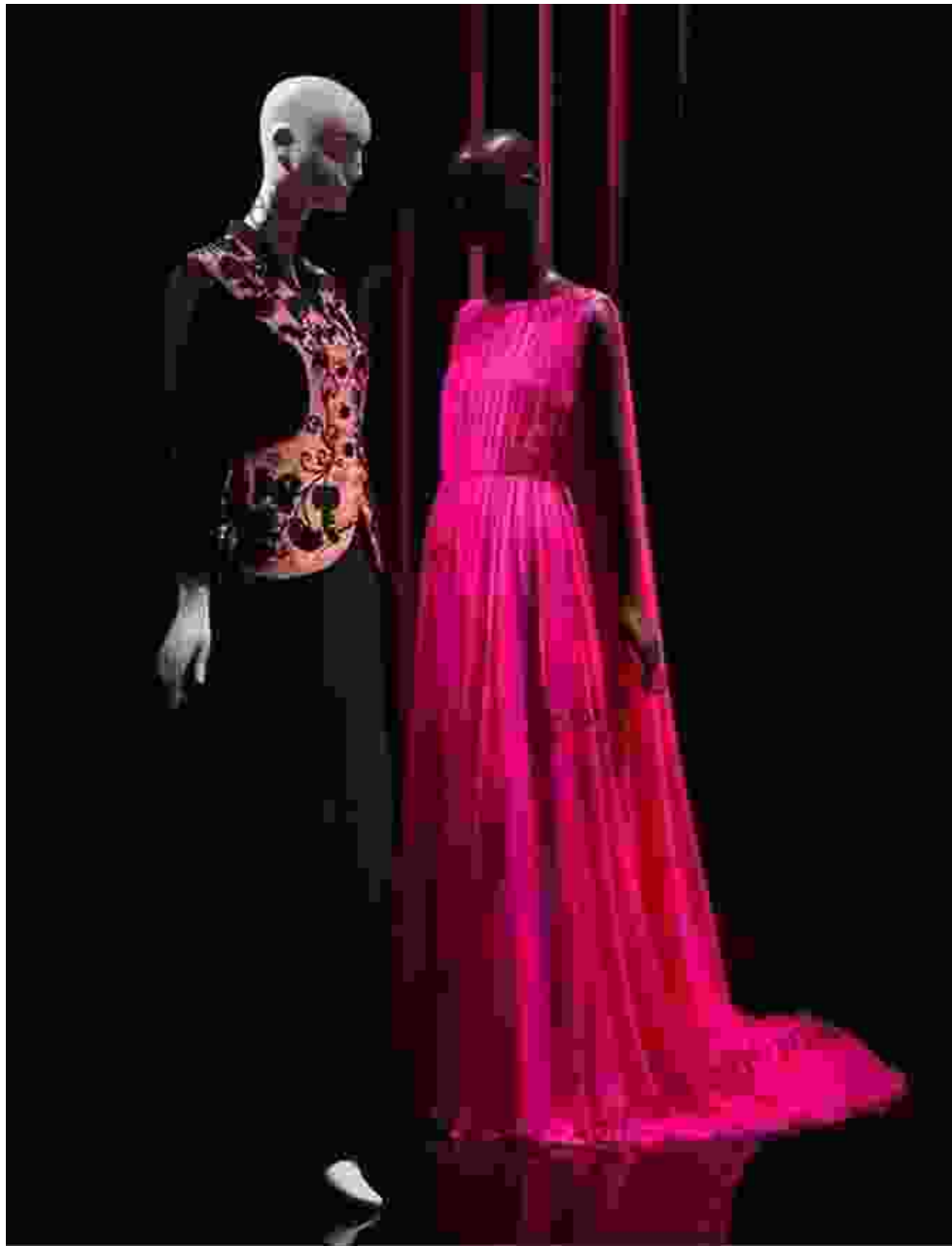
Another notable piece is the "Hat Phone," a collaboration with surrealist artist Meret Oppenheim, which combined a woman's hat with a rotary telephone.



The Lobster Dress, a surrealist masterpiece by Elsa Schiaparelli and Salvador Dalí.

Schiaparelli's signature color, known as "shocking pink," became synonymous with her bold and vibrant style. She developed the shade with

the help of a chemist, and it quickly became a symbol of her daring and unconventional approach to fashion.



Celebrities and Collaborations

Elsa Schiaparelli's designs were favored by a clientele of influential and stylish women, including Wallis Simpson, Daisy Fellowes, and Marlene Dietrich. Her collaborations with leading artists of the surrealist movement,

such as Salvador Dalí and Jean Cocteau, further enhanced her reputation as a visionary and innovator.

Schiaparelli's work extended beyond fashion. She designed costumes for theater and film, and her creations were featured in major exhibitions and museums around the world. Her artistic legacy continues to inspire contemporary designers and artists, who draw inspiration from her surrealist aesthetics and bold experimentation.

Legacy

Elsa Schiaparelli died in 1973, leaving behind an extraordinary legacy in the world of fashion. Her designs revolutionized the industry, challenging traditional notions of beauty and femininity. Her fearless embrace of surrealism and unconventional elements paved the way for countless future designers to push the boundaries of creativity.

Schiaparelli's work is celebrated in numerous retrospectives and exhibitions worldwide, and her designs remain highly sought after by collectors and fashion enthusiasts. Her name stands as a testament to the transformative power of imagination and the enduring impact of true artistic vision.

Modern-Day Relevance

In today's fashion landscape, where individuality and self-expression are highly valued, Elsa Schiaparelli's legacy remains more relevant than ever. Her bold and imaginative designs continue to inspire contemporary designers, who draw inspiration from her surrealist aesthetics and fearless experimentation.

Schiaparelli's influence can be seen in the work of designers such as Alexander McQueen, John Galliano, and Christian Lacroix. Her emphasis on craftsmanship, attention to detail, and the use of unexpected materials has left a lasting impression on the fashion world.

Elsa Schiaparelli was a true fashion icon, whose innovative and surrealist designs pushed the boundaries of creativity and left an enduring mark on the industry. Her collaborations with leading artists, her signature shocking pink color, and her timeless creations continue to inspire and fascinate fashion enthusiasts around the world. As a pioneer of surrealism in fashion, she challenged conventions and celebrated the power of imagination, leaving behind a legacy that continues to inspire generations.

References

- Milbank, C. (2009). *Elsa Schiaparelli: A Biography*. Yale University Press.
- Martin, R. (1995). *Elsa Schiaparelli*. Rizzoli International Publications.
- Musée des Arts Décoratifs. (2012). *Elsa Schiaparelli*. Skira.

Copyright © 2023



Schiaparrelli by Brian Solomon

★ ★ ★ ★ ☆ 4.9 out of 5

Language : English
File size : 20116 KB
Text-to-Speech : Enabled
Screen Reader : Supported
Enhanced typesetting : Enabled
Print length : 31 pages
Lending : Enabled

FREE

DOWNLOAD E-BOOK



Unveiling the Timeless Allure of Danish Modern: Where Art Meets Design

Danish Modern: A Fusion of Art and Function In the annals of design history, Danish Modern stands as a testament to the enduring power of...



The Most Comprehensive PCOS Diet Cookbook for a Healthier You!

If you're one of the millions of women with PCOS, you know that managing your symptoms can be a challenge. But it doesn't have to be! This PCOS diet...